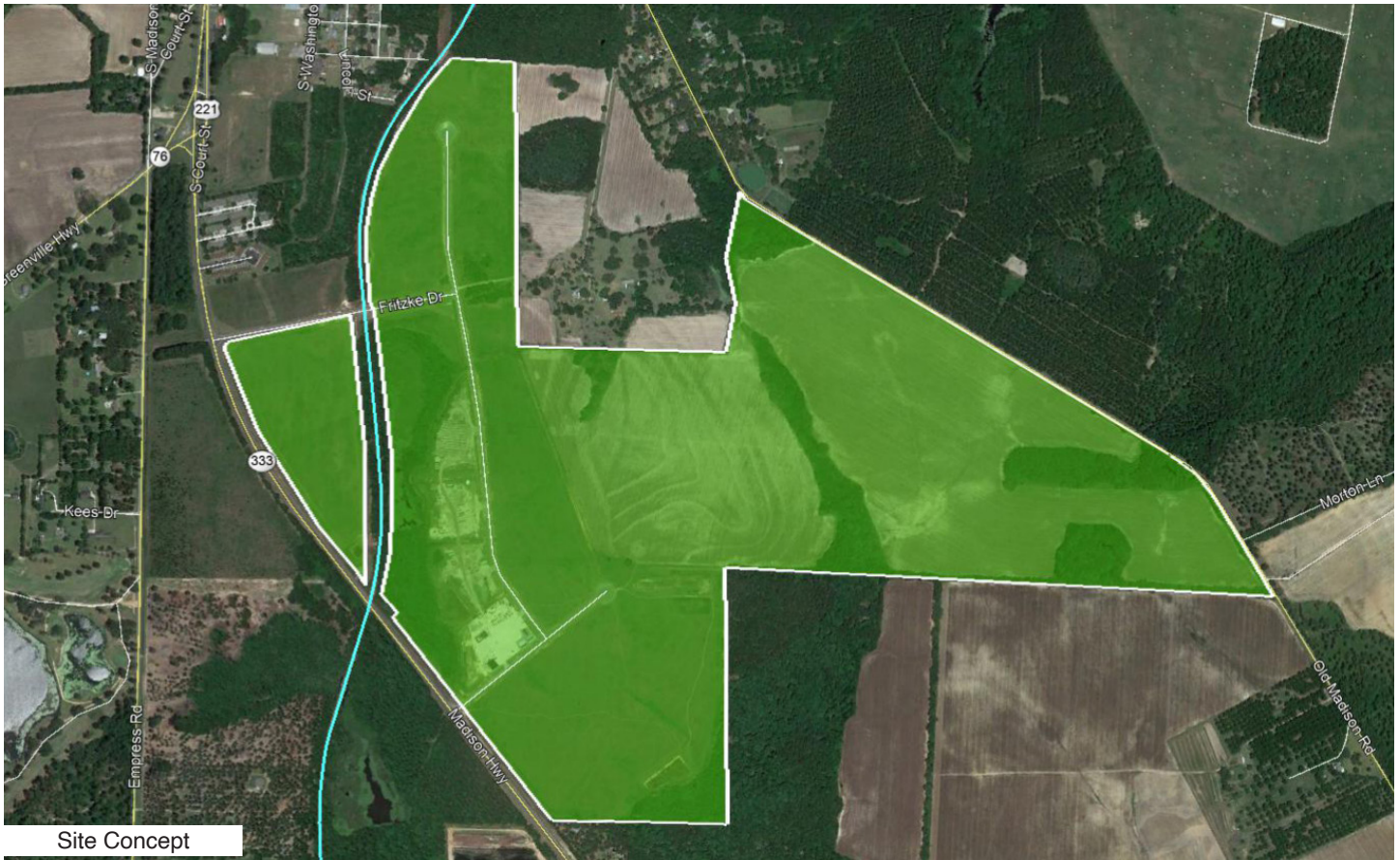


100 PROSPECT DRIVE • BROOKS COUNTY

Quitman, Georgia



Site Concept



Site Specifications

It starts with a strategic location on the south-central border of Georgia offering endless opportunity and a wealth of logistical, land, and labor advantages, like multi-modal connections for rapid reach to desirable Southeastern markets as well as global ports. Abundant and well-resourced acreage at a premiere industrial park where operations run sleek and fast with on-site rail and direct highway access. A massive labor shed—over 100,000—brimming with skills-ready workers ready to perform. In Brooks County, Georgia, the perfect start is also a happy ending for families who seek an inviting community where small-town friendliness accentuates world-class quality. Get more, be more in Brooks County. Perfectly located. Primed for growth.

Job Tax Credit rank	1
Address	100 Prospect Drive Quitman, GA
County	Brooks
Site Type	Greenfield
Acres	458
Rail Frontage	4,350 ft
Rail Spur	n/a
Zoning	Agricultural
Flood Zone	Low-to-Moderate
Airport	VLD - 19 miles
Interstate	I-75: 14 miles; I-10: 24 miles
Ownership	public
Sewer	City of Quitman
Water	City of Quitman
Gas	City of Quitman
Telecom	City of Quitman
Electricity	City of Quitman

100 PROSPECT DRIVE • BROOKS COUNTY

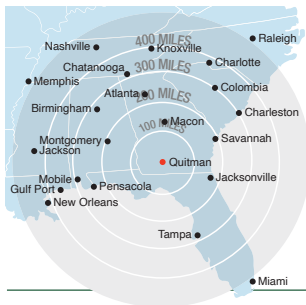
Georgia & Florida Railway

Regional Information



BUSINESS PORTFOLIO
from homegrown,
family operated businesses
to global powerhouses

Well-known global, national and regional companies operate manufacturing plants and distribution points along the **Georgia & Florida Railway**, including:



Access to Major Eastern U.S. Markets

Major Eastern U.S. markets are within one day's trucking time via quick access to I-75 and I-10. The **Georgia & Florida Railway** runs parallel to US Highway 19, and connects to CSX and Norfolk Southern railroads, providing a convenient way for industry to transport their products and materials.

LOCATION

Connect to the world and reach your destination quickly

WORKFORCE

We're not afraid of hard work

Displaying the grit that built this country, the workforce of the region is trainable and responds quickly to opportunity. Employers share countless stories of employees with 10, 15, and 20 years of service that began their careers in entry-level positions and have climbed the ranks to become major decision makers in their company's operations. Putting their dedication to work for you is an advantage towards increasing your profitability. By the numbers:

1,685,189

total population

632,637

households

\$42,261

median household income

37.6

median age

642,501

total workforce population

57,182

employed in manufacturing

34,052

employed by logistics operations

30+

higher educational institutions

Over
\$4 billion
in Farm Gate Value

More than
3 million
acres of farmland

Almost
5 million
acres of timber

Average of
78 degrees
annual temperature

- Prolific underground water aquifer system supplies more than **3 billion** gallons of water daily
- Mild winters and hot summers allow for year round, non-stop production
- Incredible universities and technical colleges provide invaluable input, training, and resources

PERFORMANCE

The proof is in our productivity